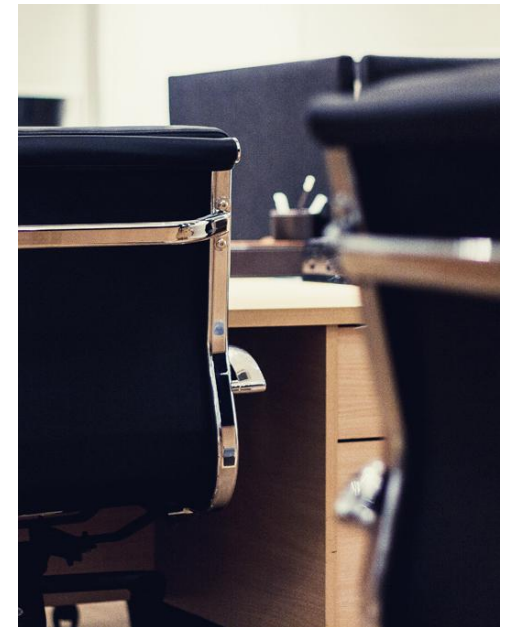


# 36 LEXINGTON STREET

Soho, W1F 0LJ

Set in the heart of Soho, on the corner of Beak Street, 36 Lexington Street is the perfect residence for the eclectic co-worker with ambition to grow.

36 Lexington Street offers a smart co-working centre, set in a professional working environment full of natural light, in London's media hub.



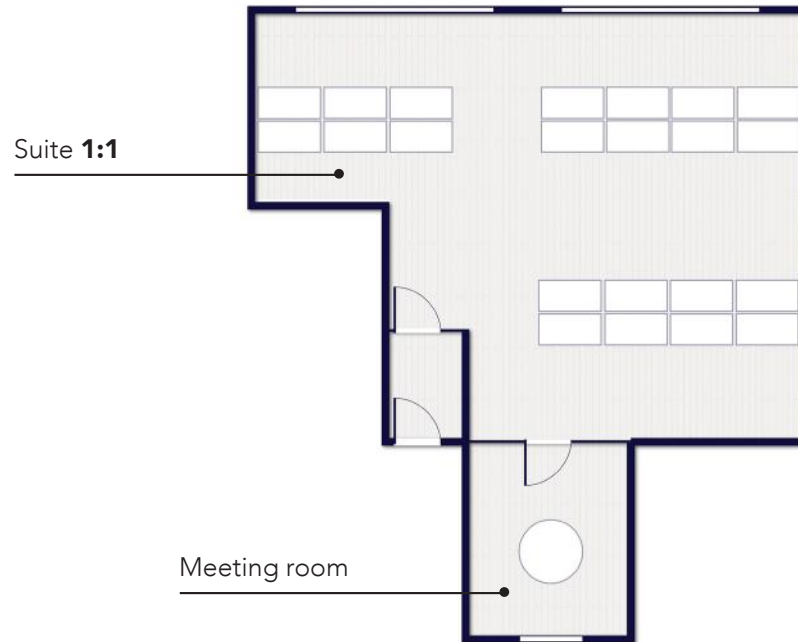
## Features (Included in the price)

- All inclusive & flexible contracts
- Building rates & all utilities
- Fully furnished
- Daily cleaning
- In-house maintenance & IT support
- Super-fast fibre internet
- Dedicated private & secure connection
- Meeting room

## FLOOR PLANS

This boutique period property provides one shared office suite and a meeting room.

**W/** [workpad.co.uk](http://workpad.co.uk) **E/** [enquiries@workpad.co.uk](mailto:enquiries@workpad.co.uk)  
**T/** 020 7788 7507 **I/** @WorkPadUK



First Floor