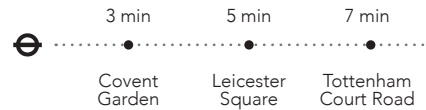


NEAL'S YARD

Seven Dials, W2CH 9DP

Set in the heart of Seven Dials, 1 Neal's Yard offers an address to impress, and is an unquestionable location for the creative minded.

Combining its original Victorian features with a minimalist interior, this is a business location with an iconic history.



FEATURES

- All inclusive & flexible contracts
- Building rates & all utilities
- Fully furnished
- Daily cleaning
- In-house maintenance & IT support
- Super-fast fibre internet
- Dedicated private & secure connection

INCLUDED IN THE PRICE

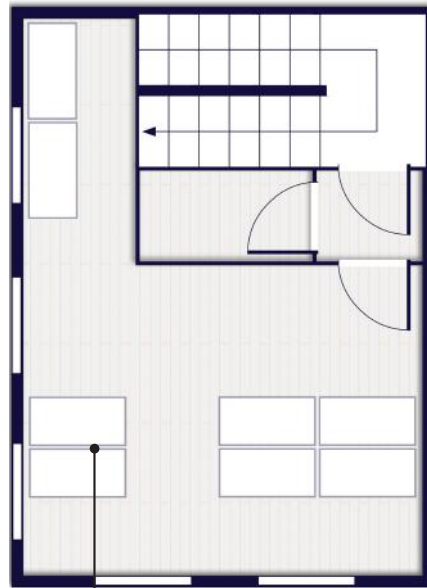
FLOOR PLANS

This boutique period property provides three unique and private office suites varying in size.

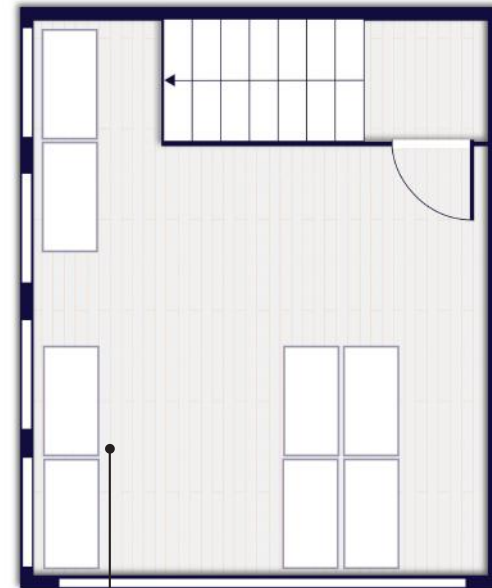
W/ workpad.co.uk **E/** enquiries@workpad.co.uk
T/ 020 7788 7507 **I/** @WorkPadUK



Suite **101**



Suite **201**



Suite **301**

First Floor

Second Floor

Third Floor