

175

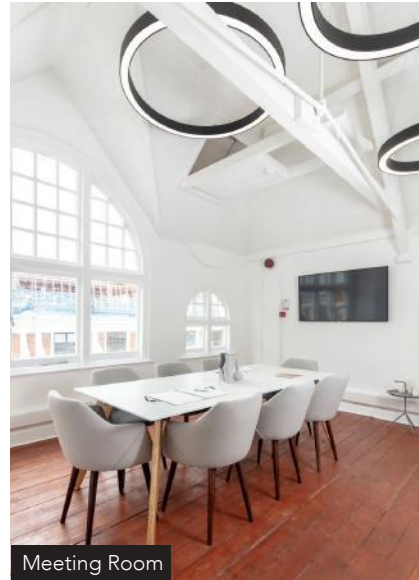
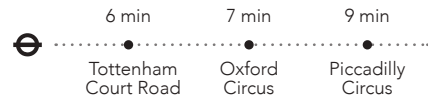
WARDOUR STREET

Soho, W1F 8WU

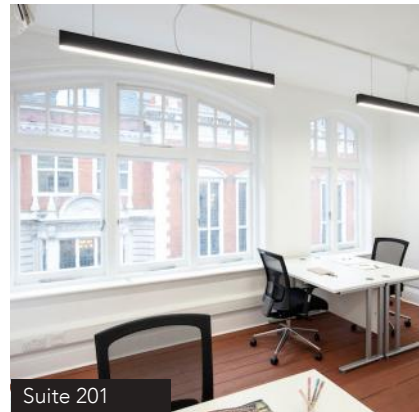
WORK
PAD

This period building, located on the famous Wardour Street, is moments away from the most popular eateries, shops and entertainment Soho has to offer.

The building has been extensively restored, benefiting from an abundance of natural light and original period features.



Meeting Room



Suite 201

FEATURES

- All inclusive & flexible contracts
- Building rates & all utilities
- Fully furnished
- Daily cleaning
- In-house maintenance & IT support
- Super-fast fibre internet
- Dedicated private & secure connection
- Meeting room
- Kitchenette

INCLUDED IN THE PRICE

FLOOR PLANS

This boutique period property provides five unique and private office suites varying in size.

W/ workpad.co.uk E/ enquiries@workpad.co.uk
T/ 020 7788 7507 I/ @WorkPadUK

