

6

DORSET STREET

Marylebone, W1U 6QL

WORK
PAD

Located in the heart of Marylebone, and moments away from the famous Marylebone High Street, 6 Dorset Street provides an enviable business address.

With a bespoke meeting room and an outdoor breakout area, 6 Dorset Street offers a variety of contemporary private office suites.



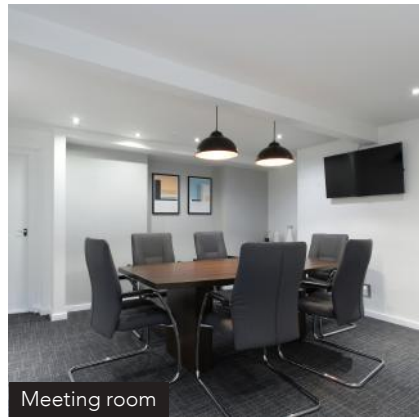
Entrance



Kitchenette



Entrance



Meeting room

FEATURES

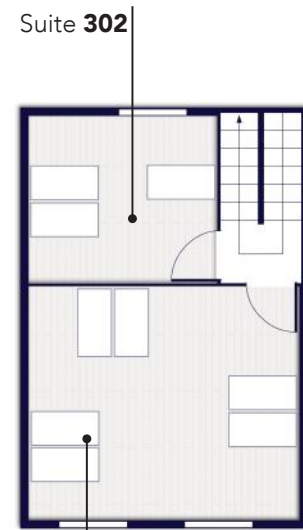
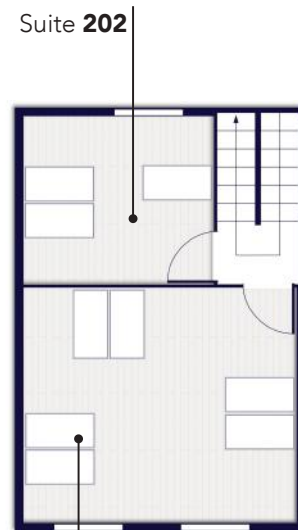
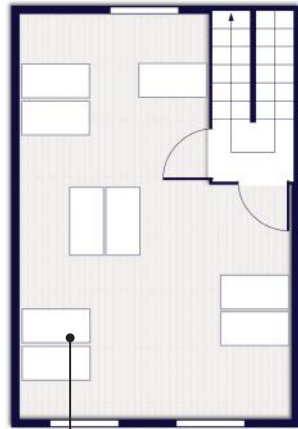
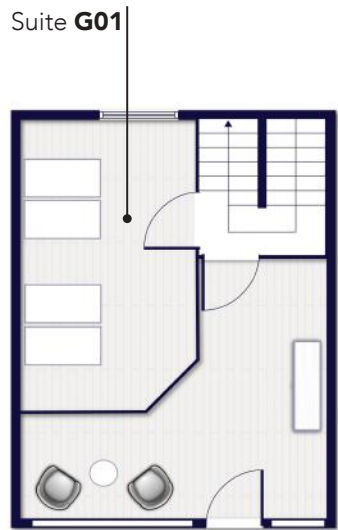
- All inclusive & flexible contracts
- Building rates & all utilities
- Fully furnished
- Daily cleaning
- In-house maintenance & IT support
- Super-fast fibre internet
- Dedicated private & secure connection
- Meeting room
- Kitchenette

INCLUDED IN THE PRICE

FLOOR PLANS

This boutique period property provides seven unique and private office suites varying in size.

W/ workpad.co.uk E/ enquiries@workpad.co.uk
T/ 020 7788 7507 I/ [@WorkPadUK](https://www.instagram.com/WorkPadUK)



Lower Ground Floor Ground Floor First Floor Second Floor Third Floor