

9-11

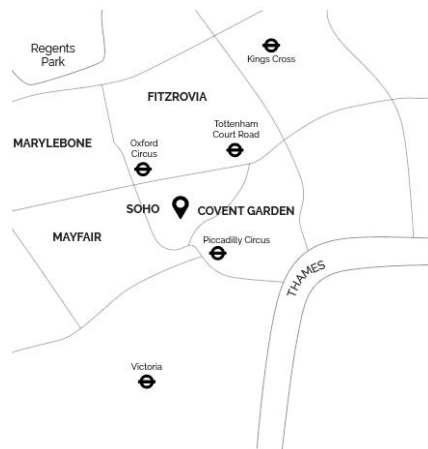
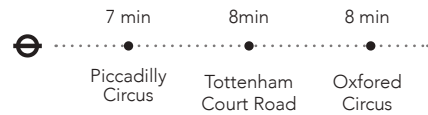
BROADWICK STREET

SOHO, W1F 0BD



Broadwick Street sits in between Wardour Street and Berwick Street, and provides an extremely desirable office location.

The building has undergone an extensive refurbishment, and owing to its unique corner location, benefits from an abundance of natural light.



FEATURES

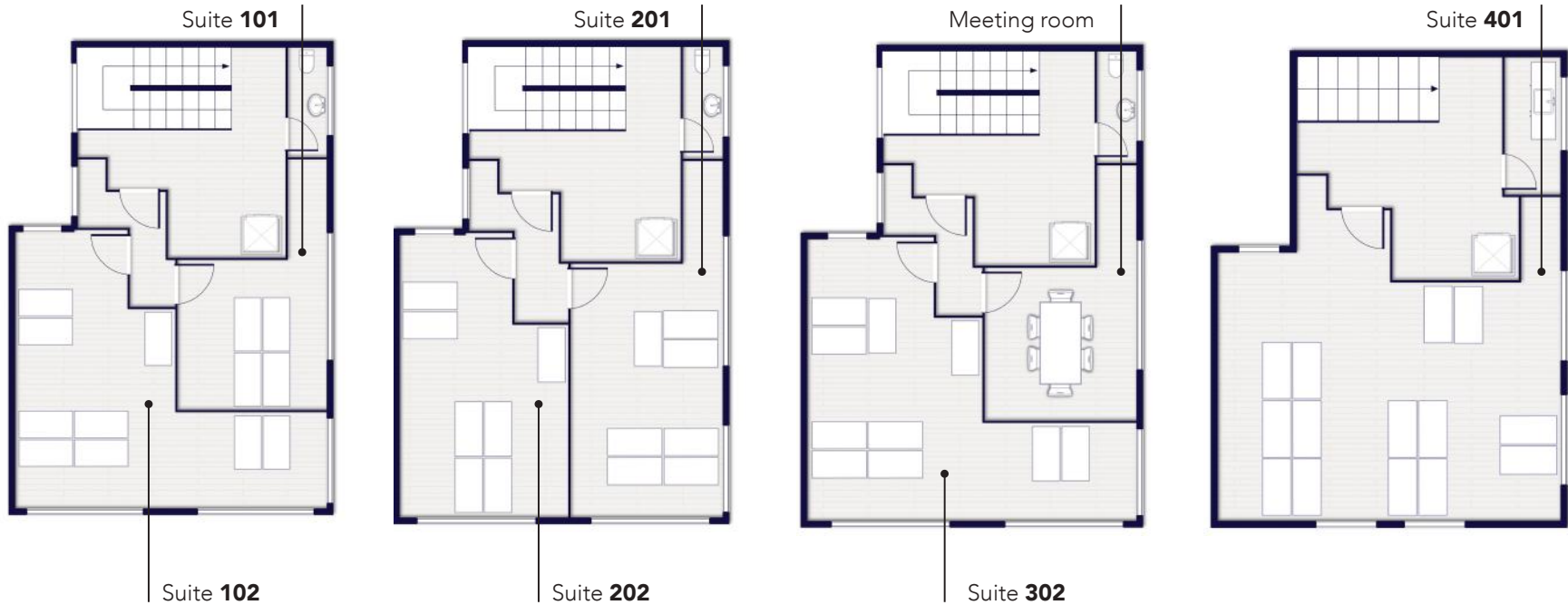
- All inclusive & flexible contracts
- Building rates & all utilities
- Fully furnished
- Daily cleaning
- In-house maintenance & IT support
- Super-fast fibre internet
- Dedicated private & secure connection
- Meeting room
- Kitchen

INCLUDED IN THE PRICE

FLOOR PLANS

This boutique period property provides six unique and private office suites varying in size.

W/ workpad.co.uk E/ enquiries@workpad.co.uk
T/ 020 7788 7507 I/ [@WorkPadUK](https://www.instagram.com/WorkPadUK)



First Floor Second Floor Third Floor Fourth Floor