

13

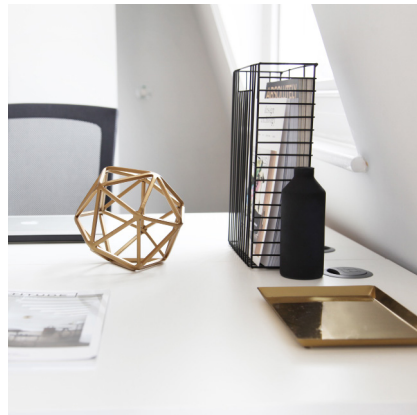
DAVID MEWS

Marylebone, W1U 6EQ

WORK
PAD

Located between Baker Street and Chiltern Street; 13 David Mews is surrounded by coffee shops, pubs and restaurants.

Comprised over 3 floors, the property consists of 3 private offices, meeting rooms and a generous reception & breakout area.



FEATURES

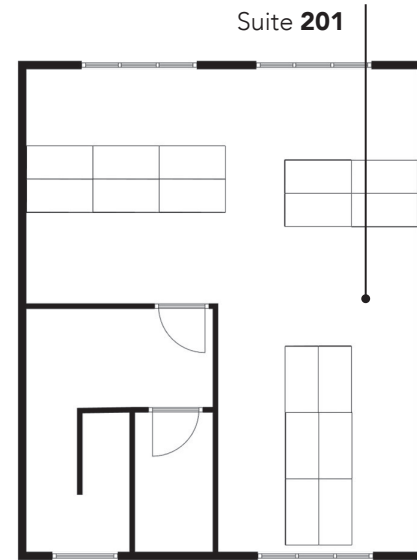
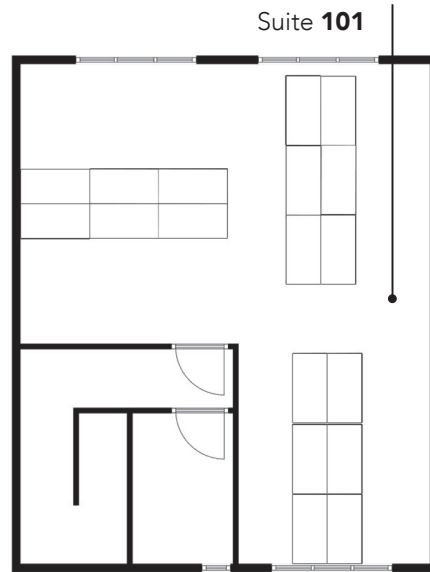
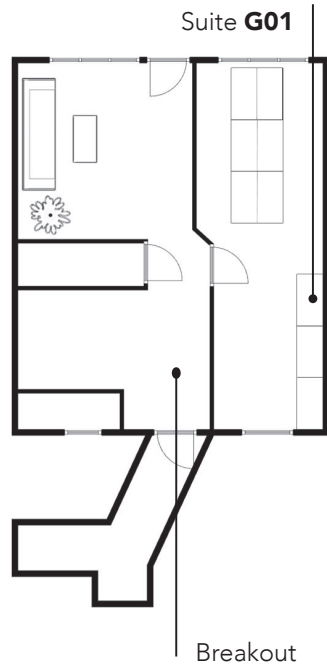
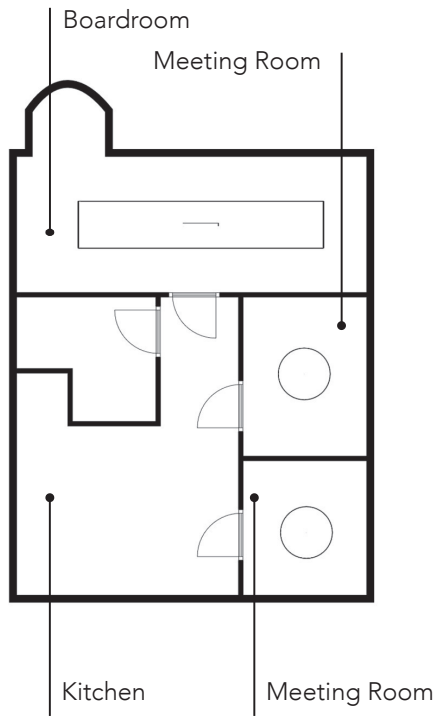
- All inclusive & flexible contracts
- Building rates & all utilities
- Fully furnished
- Daily cleaning
- In-house maintenance & IT support
- Super-fast fibre internet
- Dedicated private & secure connection
- Meeting room
- Kitchenette

INCLUDED IN THE PRICE

FLOOR PLANS

This boutique period property provides three unique and private office suites varying in size.

W/ workpad.co.uk **E/** enquiries@workpad.co.uk
T/ 020 7788 7507 **I/** @WorkPadUK



Lower Ground Floor

Ground Floor

First Floor

Second Floor